

Connecting to Connect One's iChip over a USB Connection

Quick Guide

Version 1.0

For Windows 7 32bit & 64bit

Copyright © 2012, Connect One Ltd.



International:
Connect One Ltd.
20 Atir Yeda Street
Kfar Saba 44643, Israel
Phone: +972-9-766-0456
Fax: +972-9-766-0461
Email: sales@connectone.com
<http://www.connectone.com>

USA:
Connect One Semiconductors, Inc.
560 S. Winchester Blvd.
Suite 500
San Jose, CA 95128
Tel: (408) 572-5675
Fax: (408) 572-5601

Connect One

Introduction

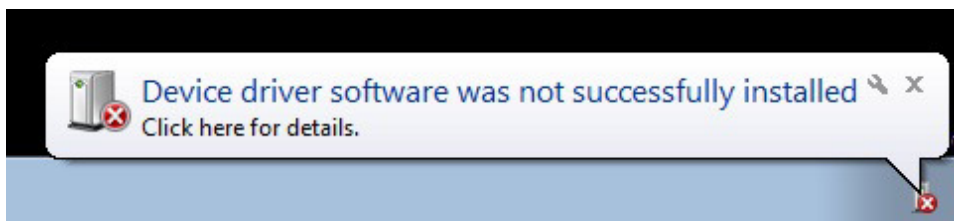
iChipConfig can utilize a PC's USB port to control and configure iChip CO2144SEC / CO2128SEC / CO2064SEC. To enable this feature, it is required to install a USB driver, supplied by Connect One, on a PC running Windows 7.

The driver installs a USB device that appears as an additional **Port** to the Windows 7 operating system. This port is connected as a virtual COM interface.

The USB driver is supplied as 3 separate files: sabalo.inf, iChip.inf & usbser.sys.

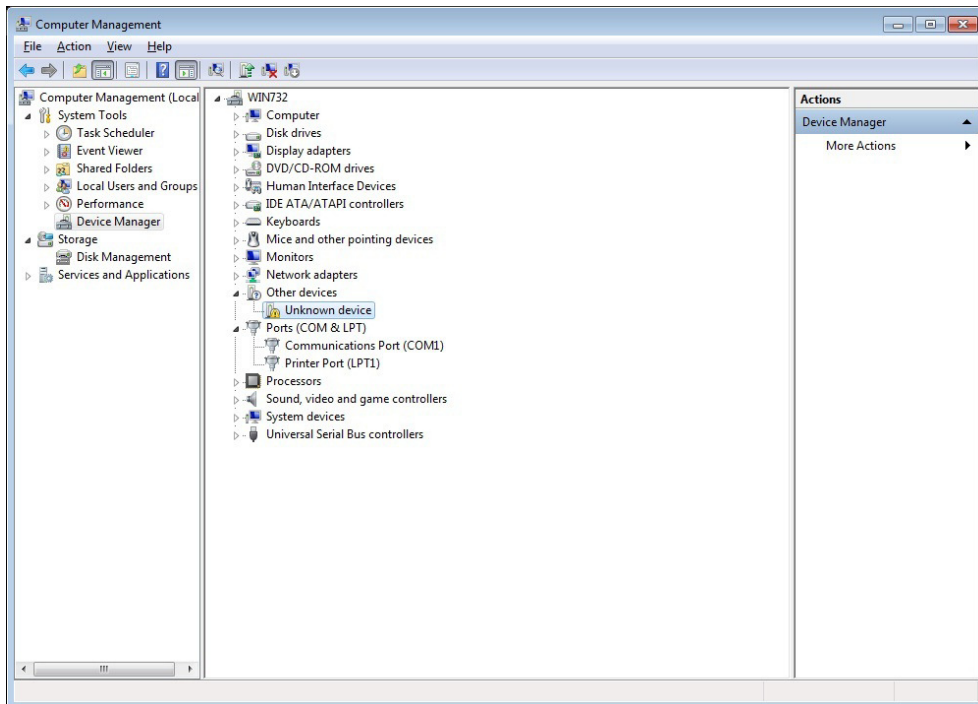
Installing the USB Drivers

1. Copy "sabalo.inf", "iChip.inf" & "usbser.sys" to a directory of your choice, e.g. *D:\Downloads\ConnectOne USB Drivers. .*
2. Connect one end of a USB cable to your PC. Connect the other end to the USB "device" connector of the board on which the iChip CO2144SEC / CO2128SEC / CO2064SEC is mounted. For example: To II-EVB-630 evaluation board for the CO2128 by Connect One.
4. Turn on the power to the board.
5. Windows 7 will attempt to install a driver but will fail and report "Device driver software was not successfully installed". Click on the message balloon and the Device manager will open up.

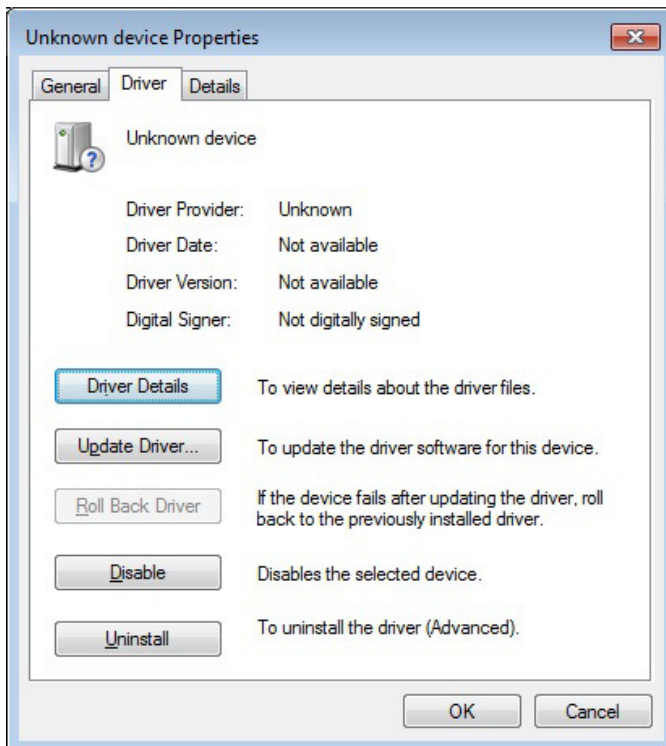


Connect One

6. Right click on unknown device, select "Properties", and then select the "Driver" tab.

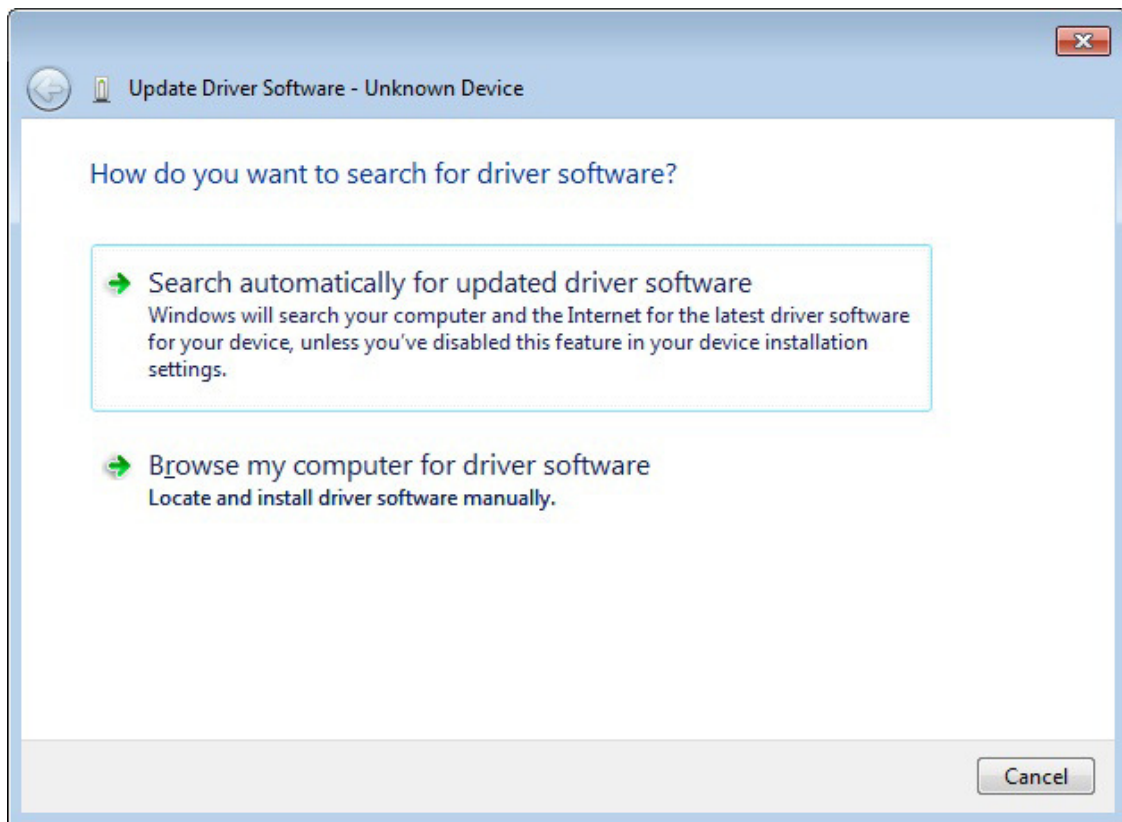


7. Click "Update Driver..."



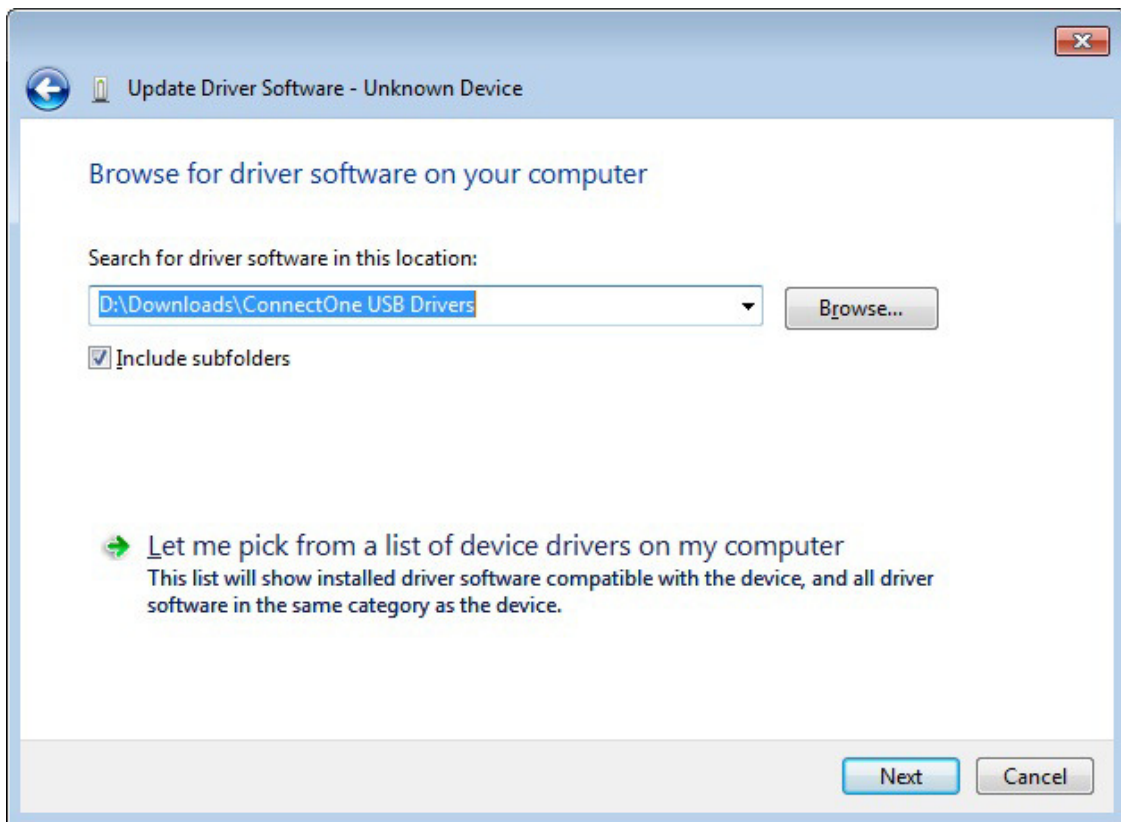
Connect One

8. Select "Browse my computer for driver software"

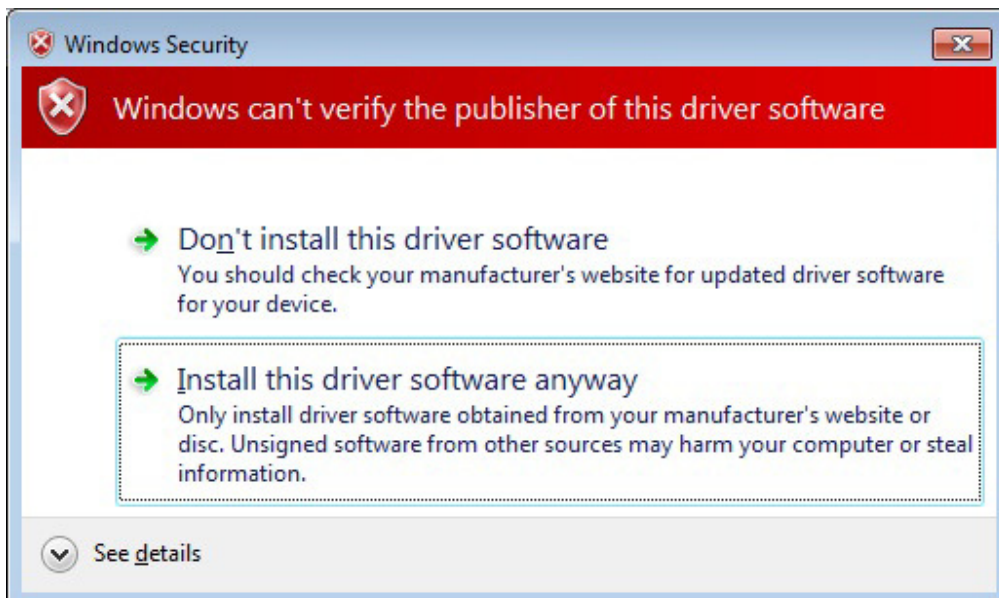


Connect One

9. Select the folder where you have copied the files in step 1 and click "Next".

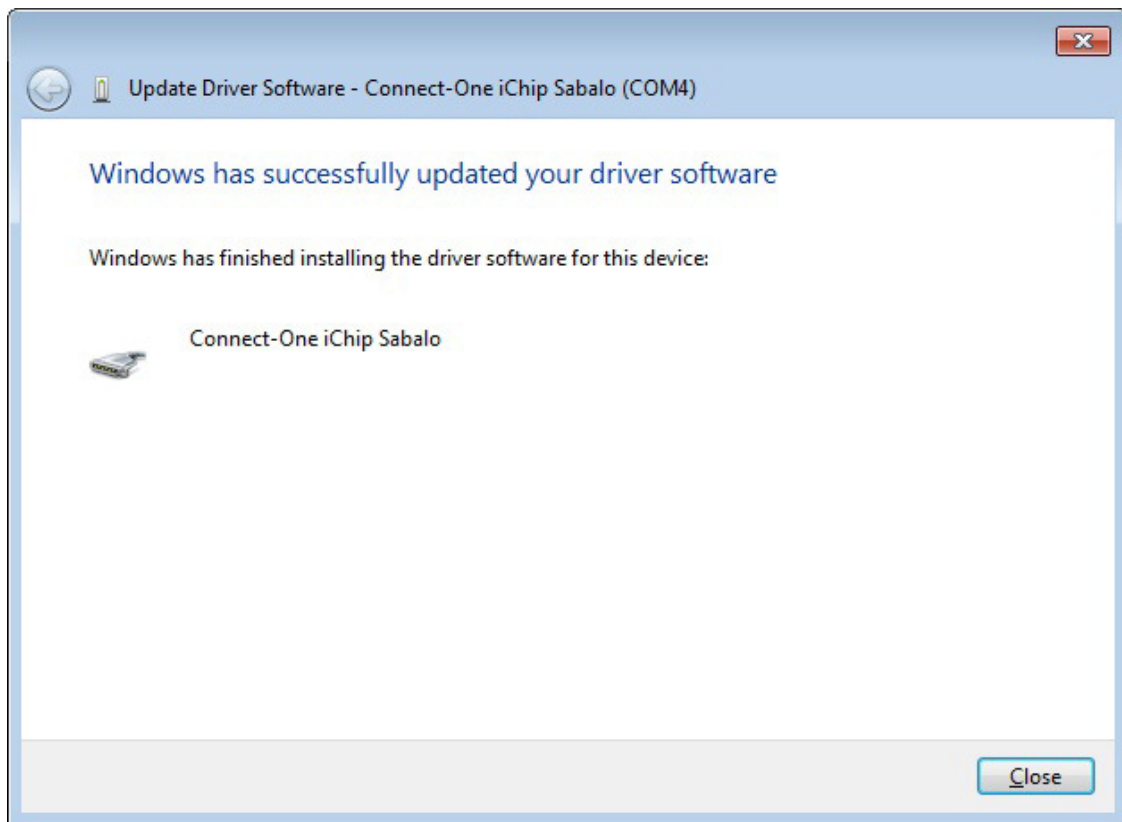


10. Windows Security message will pop up. Select "Install this driver software anyway".



Connect One

11. Windows will complete the installation phase and report successful installation.



Connect One

The new COM port device will appear under Ports (COM & LPT) in the device manager.

